

# GROW CRM – THEMES DOCUMENTATION

This document will guide you on how to install a **new theme** in Grow CRM.

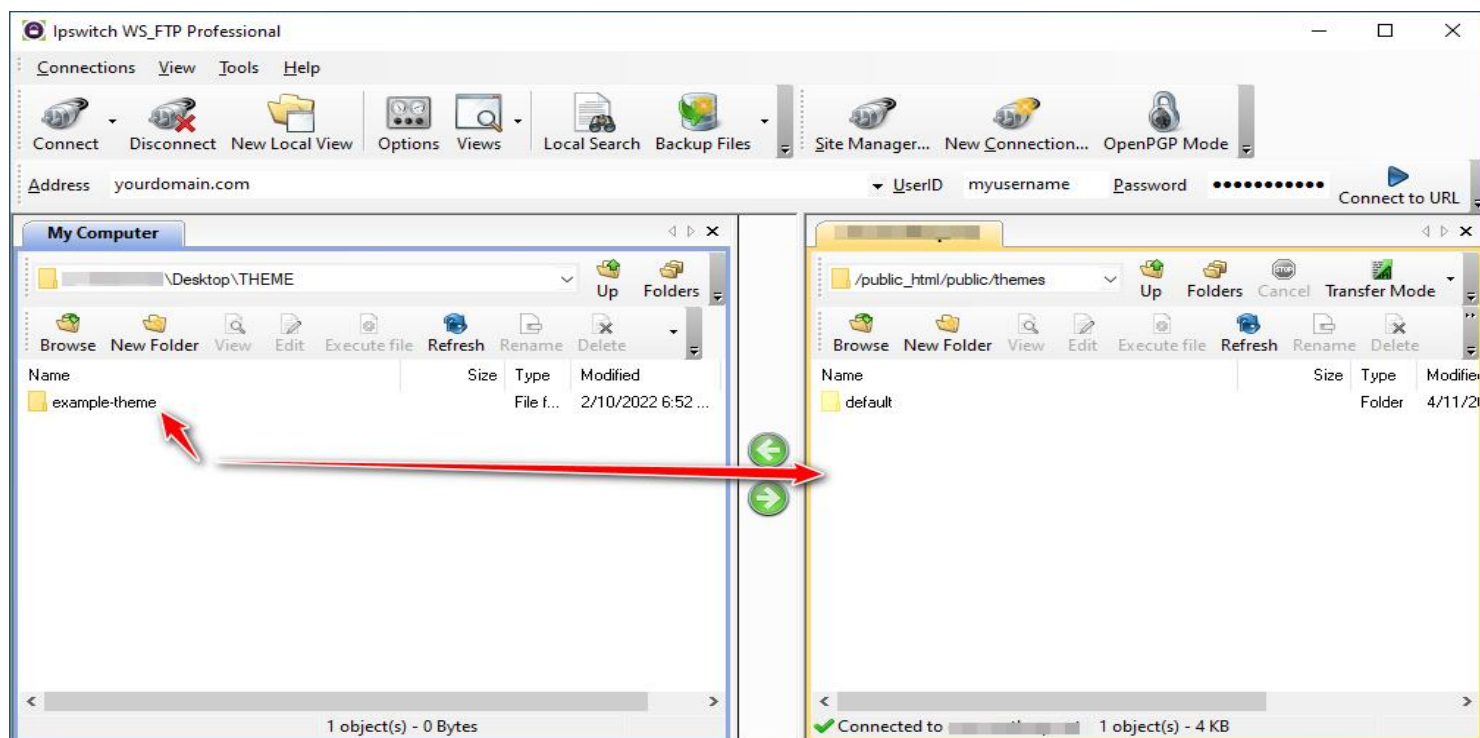
A theme is an **addon** for Grow CRM, which means you should first install Grow CRM (as per its instructions)

Once you have fully installed Grow CRM, you can now follow the steps below, for you to install the Midnight Theme

## Uploading The Theme

This step can be done using an **FTP client** or your web hosting control panel's file browser tool. In this example we are using an FTP client

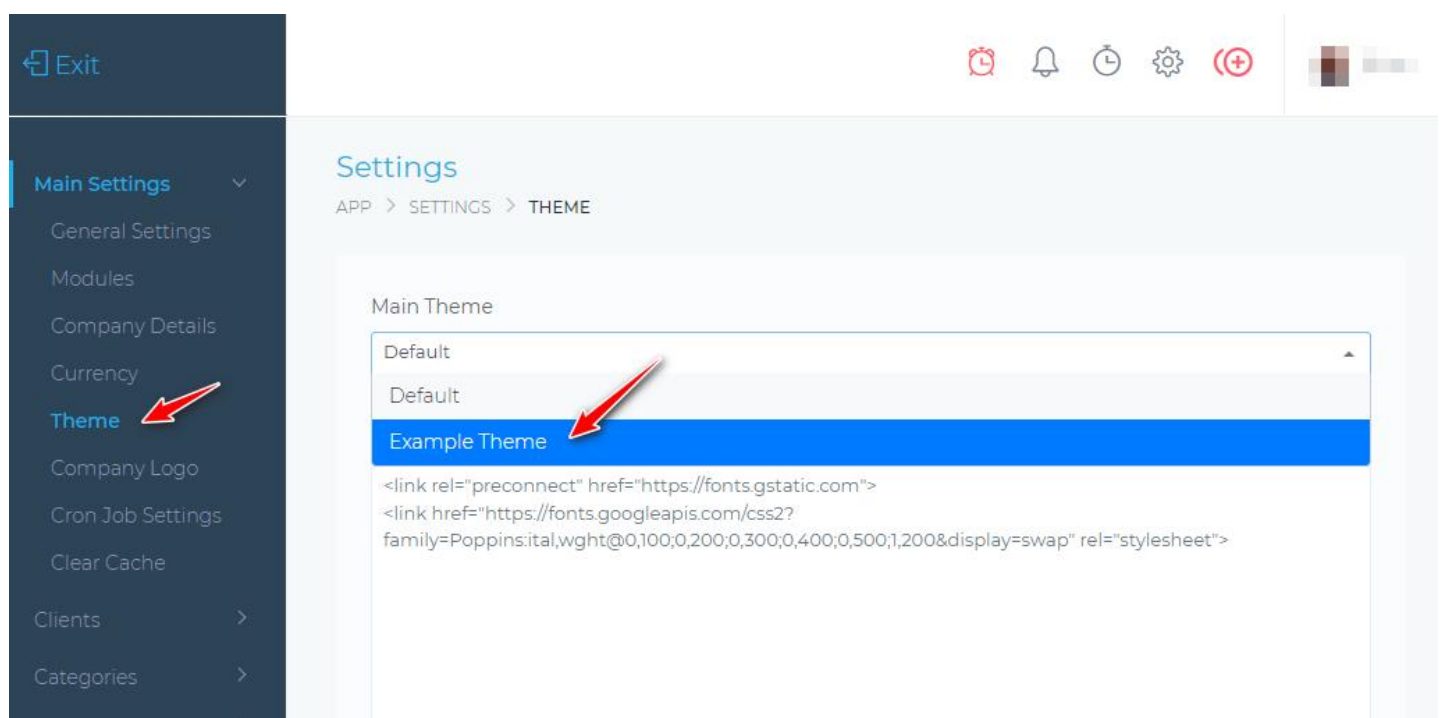
- Unzip the folder you downloaded from your Codecanyon dashboard.
- Connect to your website's server using an **FTP client** (as shown below).
- The left window above is your computer and the right window is your website's server.
- Now drag and drop the folder **exampletheme** to the folder `/public/themes`.



## Enable The Theme

Once you have completed the uploading steps show above, you must now log into your Grow CRM dashboard. See image below.

- Log into your Grow CRM dashboard
- Click on the **settings** icon
- Navigate to **Main Settings > Themes**
- Select **exampletheme** from the main theme drop down menu
- Click save
- Refresh your browser



That's it, you now have enabled your new theme for your Grow CRM app.

## Getting Help

If you have any questions or you need assistance, you can send us an email at **support@growcrm.io**